

COMICS AND GRAPHIC NOVELS Review

Based on the Online with the CMC Presentation “When Speech Bubbles and Pictures Collide: Cataloging Graphic Novels” presented on Thursday, September 16, 2021

Presented by



SHARE

SHARING HEARTLAND'S AVAILABLE
RESOURCES EQUALLY

Illinois Heartland Library System

Graphic Novel Notes

- Do not use serial records or set records for graphic novels – use a monographic record for the individual volume.
- Use the free-floating form subdivision \$v Comic books, strips, etc. with all topical headings.
- Use the following form headings for all graphic novels and comic book compilations:
 - 655 _ 7 \$a Graphic novels. \$2 lcgft
 - 655 _ 7 \$a Comics (Graphic works) \$2 lcgft
- When a translated work has been adapted, enter the work under the person responsible for the adaptation. Make an added entry for the original author.

Question #1

Does IHLS catalog a graphic novel as a single record or as a monographic set?

- a. Single record
- b. Monographic set

Answer #1

a. Single record

Graphic novels

[Home](#) > [Policies and Procedures](#) > Graphic novels

Bibliographic Record

Do not use serial records or set records for graphic novels—use a monograph record for the individual volume.

Question #2

In the “Cont” (Content) fixed field, what code indicates this work is a comic or graphic novel?

- a. 6
- b. b
- c. d
- d. 4

Answer #2

a. 6

6

Comics/graphic novels

BKS, CNR. Instances of "sequential art" in which a story (whether fact or fiction) is told primarily through a set of images (often in the form of multiple "panels" per page) presented concurrently but meant to be "read" sequentially by the viewer. The accompanying narrative and/or dialog text, when it occurs, works integrally with the images to tell the story. **Note:** Replaces code *c* in [LitF](#).

Cont 6 0 0 0

245 1 4 The lightening thief : #b the graphic novel / #c by Rick Riordan ...

650 0 Mythology,Greek #v Comic books, strips, etc.

Code "b" is used for Bibliographies.
Code "d" is used for Dictionaries.
There is no code "4".

Question #3

What wording do we use for the 300 field \$b to indicate illustrations?

- a. chiefly illustrations
- b. chiefly color illustrations
- c. Both a and b are acceptable

Answer #3

c. Both a and b are acceptable

Under the LCRI for AACR2 2.5C5, if the publication consisted wholly or predominantly of illustrations, the cataloger was instructed to give all ill. or chiefly ill., as appropriate. It is not entirely clear whether RDA allows phrasing of this kind; it appears that a note is preferable, although “illustrations” alone would still be recorded in 300, with a 500 note “Chiefly illustrations.” Or a note with similar phrasing.

Optionally, under AACR2/LCRIs, you had the option to follow this LC practice: If those illustrations are all of one type, give all [name of type] or chiefly [name of type]. There is no corresponding policy statement for RDA.

Information take from: <https://web.library.yale.edu/Cataloging/CIP/editing-300b>

Question #4

Which 650 free-floating form subdivision is used when the item is a graphic novel or comic strip?

- a. \$v Graphic novels
- b. \$v Comics (Graphic works)
- c. \$v Comic books, strips, etc.

Answer #4

c. \$v Comic books, strips, etc.

Use the free-floating form subdivision \$v Comic books, strips, etc. with all topical headings.

EXAMPLES

```
650 _ 0 #aRunaway teenagers#vComic books, strips, etc.
```

```
650 _ 0 #aVoyages and travels#vComic books, strips, etc.
```

Question #5

What TWO 655 genre forms are required when the work is a graphic novel?

- a. \$a Graphic novels. \$2 lcgft
- b. \$a Comic books, strips, etc. \$2 lcgft
- c. \$a Comics (Graphic works). \$2 lcgft
- d. \$a Graphic works (Comics). \$2 lcgft

Answer #5

a. \$a Graphic novels. \$2 lcgft

c. \$a Comics (Graphic works). \$2 lcgft

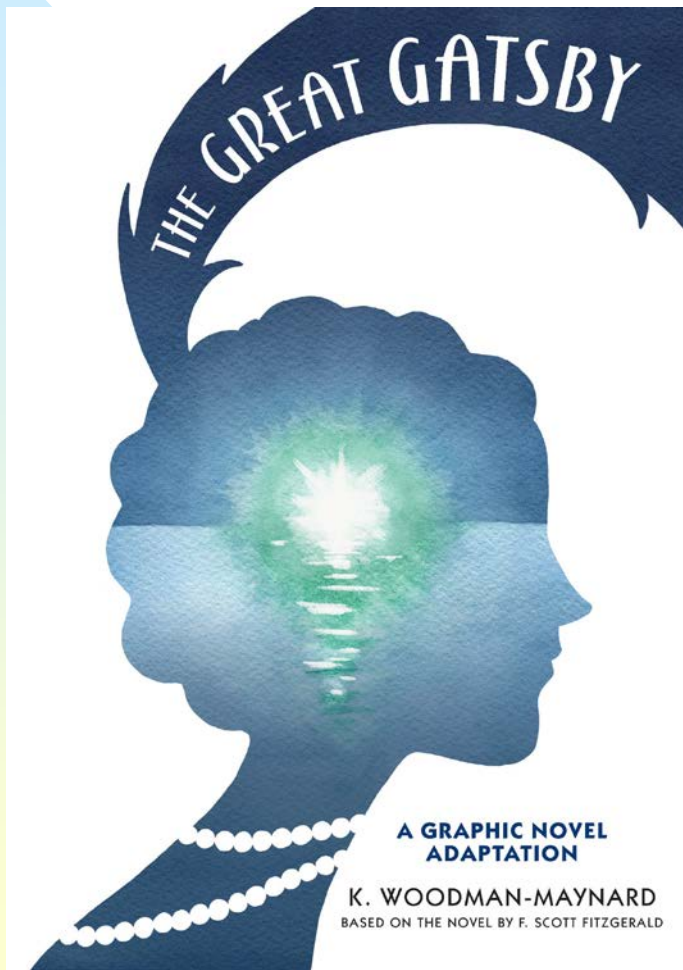
Use the two form headings above for all graphic and comic book compilations.

EXAMPLE

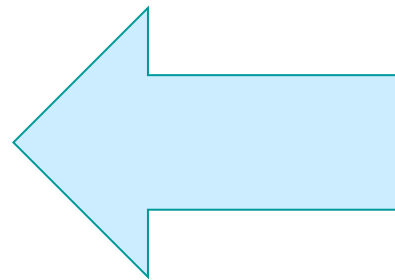
```
655 _ 7 #aGraphic novels.#2lcgft
655 _ 7 #aComics (Graphic works)#2lcgft
```

Assign other genre headings from the LCGFT as appropriate.

Question #6



The adapter of a graphic novel is placed in which field, 100 or 700?



Answer #6

Answer: 100

When a work has been adapted/translated, enter the work under the person responsible for the adaptation. Make an added entry for the original author.

100	1	#aWoodman-Maynard, K.,#eillustrator,#eauthor.
245	14	#aThe Great Gatsby :#ba graphic novel adaptation /#cF. Scott Fitzgerald ; adapted by K. Woodman-Maynard.