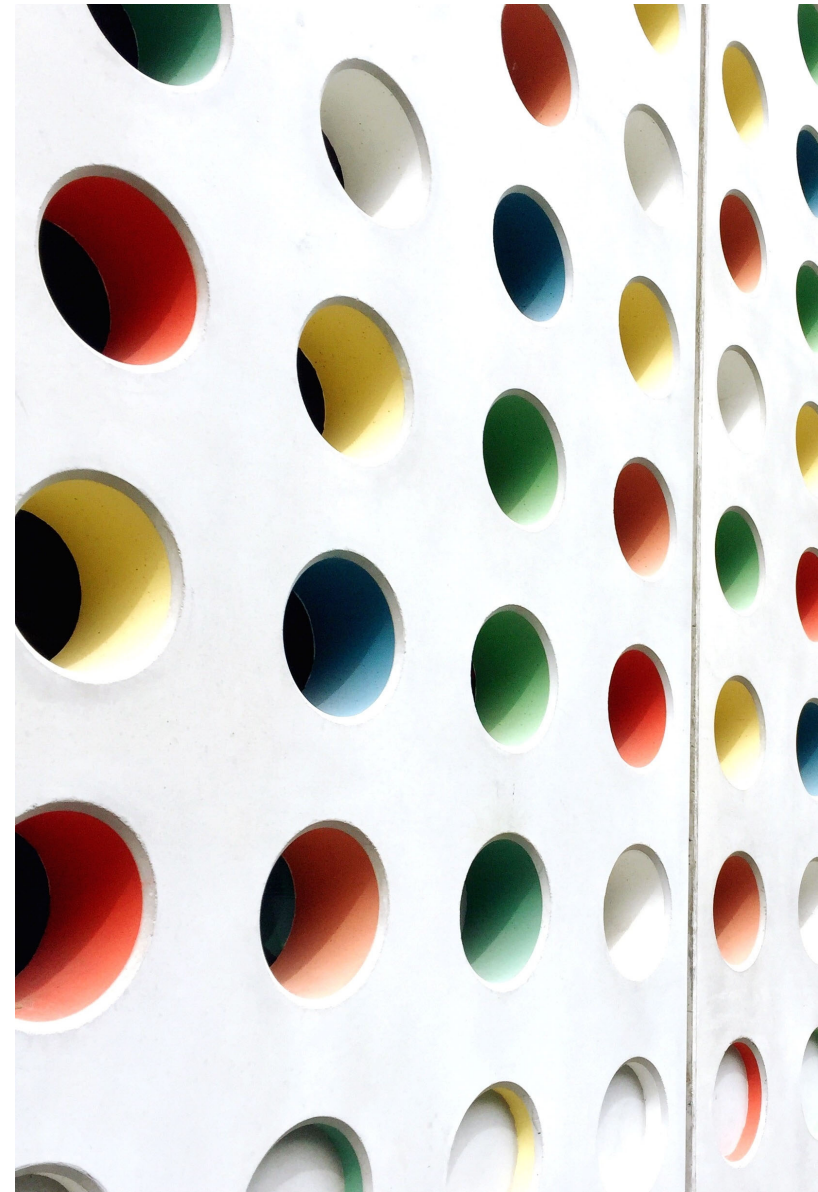


Don't Go Changing:

THE NEW 334, 340, & 563 MARC FIELDS

Dr. Pamela Thomas, Bibliographic Grant Manager,
pthomas@illinoisheartland.org & Eric McKinney, CMC
Cataloger, emckinney@illinoisheartland.org, Cataloging
Maintenance Center, IHLS, September 8, 2022



Agenda

MARC
FIELD 334

MARC
FIELD 340

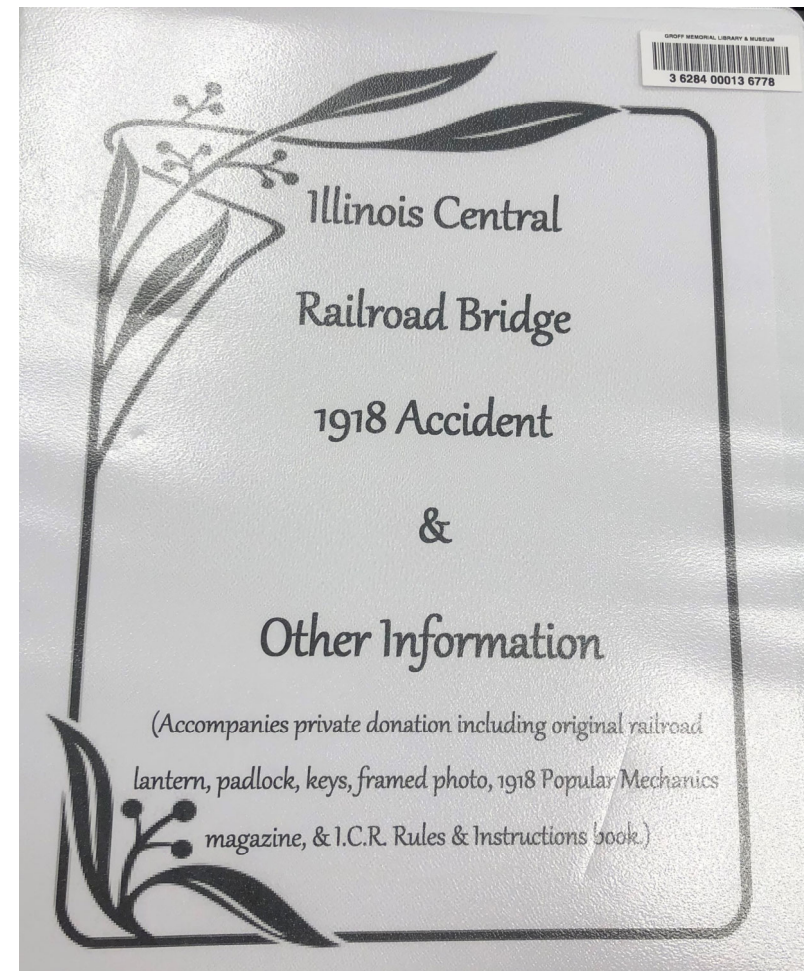
MARC
FIELD 563

334__ single unit #2 rdami

334__ multiple unit #2 rdami

MARC Field 334 (Mode of Issuance)

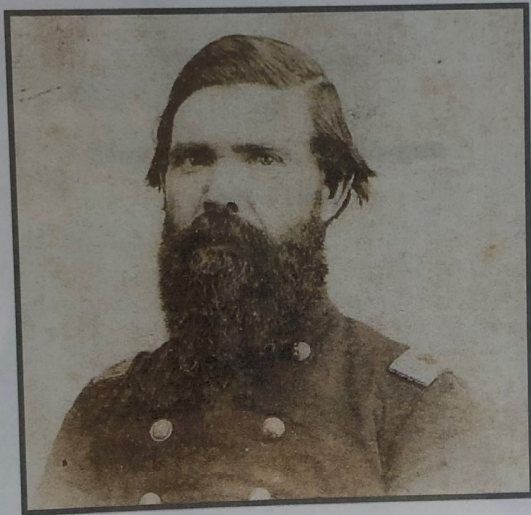
Illinois Central Railroad Bridge 1918 Accident



245 0 0 Illinois Central Railroad Bridge 1918 accident : #b & other information.
246 3 Illinois Central Railroad Bridge 1918 accident : #b and other information
246 3 I.C.R.R. Bridge 1918 accident : #b & other information
264 1 Grayville, Illinois : #b [Groff Memorial Library], #c [between 1916 and 2022]
300 16 pages of various pagings : #b illustrations, portraits ; #c 29 cm
334 single unit #2 rdami

Illinois Central Railroad Bridge 1918 Accident 334 Example

Major Thomas W. Morgan
1826 - 1875

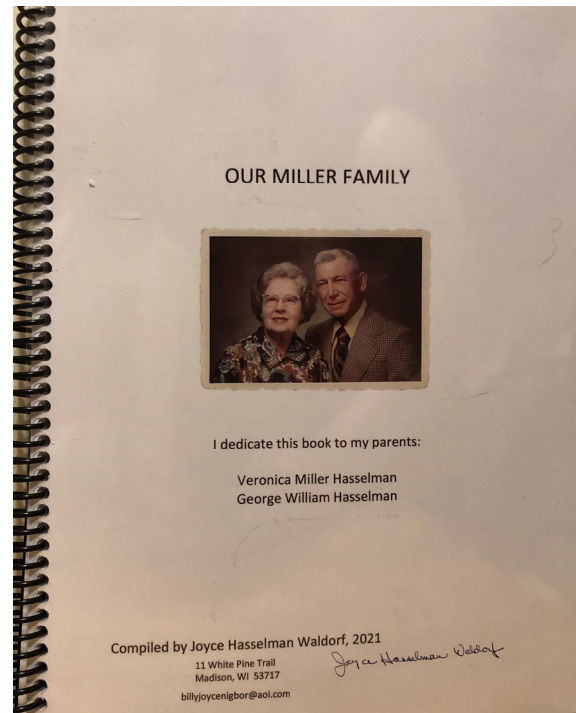


49th Illinois Infantry Regiment
Monroe County

Chronology of military service of Major Thomas W. Morgan (1861-1864)

100 1 Chmelir, William E., #e author.
 245 1 0 Chronology of military service of Major Thomas W. Morgan (1861-1864) / #c by William E. Chmelir.
 246 1 4 Major Thomas W. Morgan, 1826-1875 : #b 49th Illinois Infantry Regiment Monroe County
 264 1 [St. Louis, Missouri] : #b [William E. Chmelir], #c 2022.
 300 32, 18 pages : #b illustrations (some color), color maps, portraits (some color) ; #c 28 cm
 334 single unit #2 rdami

Chronology of military service of Major Thomas W. Morgan (1861-1864) 334 Example



Our Miller Family

100 1 Waldorf, Joyce Hasselman, #e compiler.
245 1 0 Our Miller family / #c compiled by Joyce Hasselman Waldorf.
264 1 Madison, WI : #b Joyce Hasselman Waldorf, #c 2021.
300 194 pages : #b illustrations (some color), maps, portraits (some color), genealogical tables ; #c 28 cm
334 single unit #2 rdami

Our Miller Family 334 Example

245	0	0	David Davis Mansion : ‡b miscellaneous alterations, ‡k blueprints.
246	1		‡i Series title : ‡a Illinois State Historical Library blueprints
264		1	[Springfield, Illinois] : ‡b [State of Illinois Capital Development Board], ‡c [1943-1972]
300			62 sheets ; ‡c 93 x 61 cm
334			multiple unit ‡2 rdami

David Davis Mansion Blueprints

334 Example

MARC Field 340 – Physical Medium

Physical description information for an item that requires technical equipment for its use, and/or more granular description information of an item's material properties to facilitate access and discovery or to support collection management. Coded physical information is contained in fields 007 and 008. -- OCLC.com

‡a = The Material Base And Configuration

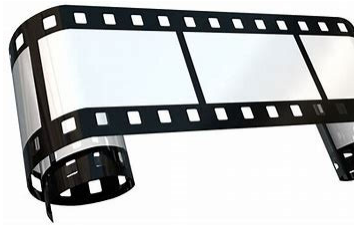
MARC Field 340 – Subfield a



340		‡a wood ‡2 rdamat
340		‡a cardboard ‡2 rdamat
340		‡a paper ‡2 rdamat
340		‡a plastic ‡2 rdamat

MARC Field
340 –
Subfield b

#b = The Dimensions



340		#b 35 mm
-----	--	----------



340		#b 90 min.
-----	--	------------



340		#b 4 3/4 in.
-----	--	--------------

MARC Field 340 – Subfield c

‡c = The Material Applied To The Surface



340 | | ‡c oil paint ‡2 rdamat

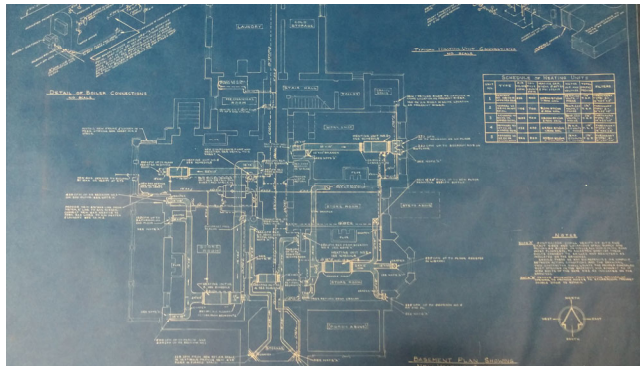
340 | | ‡c ink ‡2 rdamat



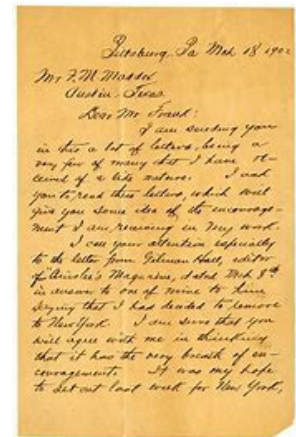
340 | | ‡c rubber ‡2 rdamat

#d = The Information Recording Technique

MARC Field 340 - Subfield d



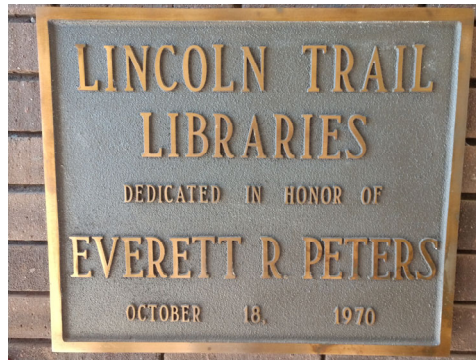
340 | | #d blueprint process #2 rdapm



340 | | #d handwritten

MARC Field
340 -
Subfield e

⌘e = Support



340 | | ⌘e metal ⌘2 rdamat



340 | | ⌘e ivory ⌘2 rdamat

MARC Field
340 -
Subfield f

#f = Production Rate/Ratio



340		#f 33 1/3 rpm
-----	--	---------------



340		#f 1:10,000
-----	--	-------------

MARC Field
340 -
Subfield g

#g = The Color Content



340			#g monochrome #2rdacc
-----	--	--	-----------------------



340			#g polychrome #2rdacc
-----	--	--	-----------------------

#h = The Location Within The Medium

MARC Field
340 -
Subfield h



340		#h side A, track 3
-----	--	--------------------



340		#h frame number 19
-----	--	--------------------

MARC Field 340 - Subfield i

‡i = Access Requirements
Involving Technical Equipment



340		‡i VHS video player
-----	--	---------------------



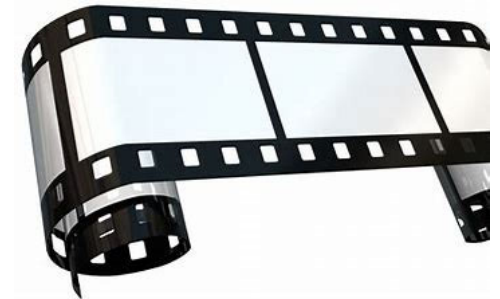
340		‡i Microsoft Xbox One
-----	--	-----------------------

MARC Field
340 -
Subfield j

‡j = The Generation



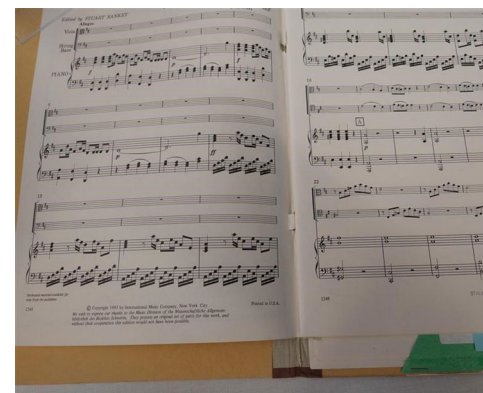
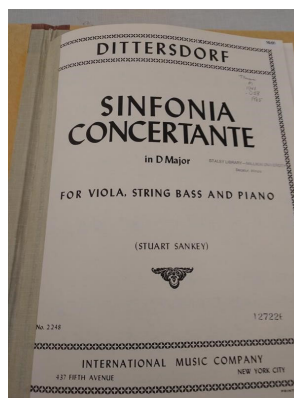
340		‡j derivative master ‡2 rdagen
-----	--	--------------------------------



340		‡j printing master ‡2 rdagen
-----	--	------------------------------

MARC Field
340 -
Subfield k

‡k = The Layout



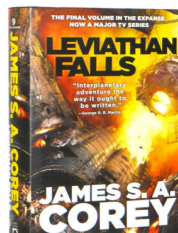
340

‡k open score ‡2 rdalay

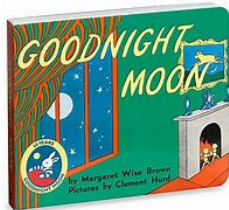


MARC Field 340 - Subfield 1

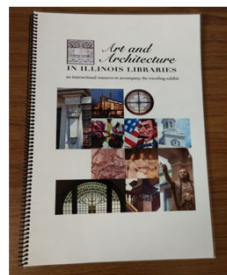
#1 = The Binding



340 | | #1 case binding #2 rdatb



340 | | #1 board book binding #2 rdatb



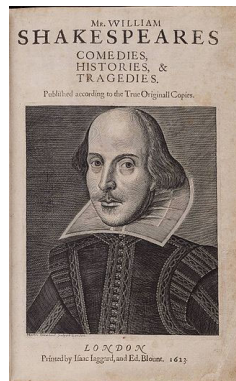
340 | | #1 spiral binding #2 rdatb

MARC Field 340 - Subfield m

⌘m = The Book Format

Leaf or folium - "A double-sided page folded vertically." =
Wikipedia

Folio - "A bibliographic format that consists of one or more leaves
that are 1/2 of the whole sheet." - RDA Registry



Shakespeare's first folio circa 1623

340 ⌘m folio ⌘2 rdabf

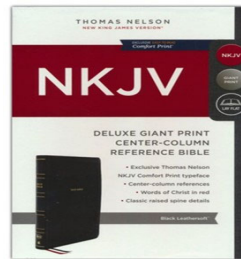
MARC Field 340 - Subfield n

⌘n = The Font Size



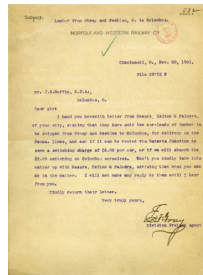
340

⌘n large print ⌘2 rdafs



340

⌘n giant print ⌘2 rdafs



340

⌘n 12 point

MARC Field 340 – Subfield o

‡o = The Polarity



340		‡o positive ‡2 rdapo
-----	--	----------------------



340		‡o negative ‡2 rdapo
-----	--	----------------------

#p = The Illustrative Content

MARC Field 340 - Subfield p

300 | | volumes : #b illustrations (some color), maps (some color), plans, portraits, diagrams ; #c 28 cm

340			#g monochrome #2 rdapcc
340			#g polychrome #2 rdacc
340			#p illustration #2 rdaill
340			#p map #2 rdaill
340			#p plan #2 rdaill
340			#p portrait #2 rdaill
340			#p diagram

MARC Field 340 - Subfield 3

#3 = Materials Specified



340		#3 die #a wood #2 rdamat
340		#3 pawn #a wood #2 rdamat
340		#3 container #a cardboard #2 rdamat
340		#3 cards #a paper #2 rdamat
340		#3 answer sheet pad #a paper #2 rdamat
340		#3 instruction booklet #a paper #2 rdamat
340		#3 timer #a plastic #2 rdamat
340		#3 box insert #a plastic #2 rdamat

100	1		Strunk, Bill, ‡e compiler.
245	1	0	Amelia Büngener Strunk-Wilhem Strunk ; Valentine Wick - Catherine (Krezeisen) Wick ; W.L. Strunk - Anna (Wick) Strunk : ‡b family genealogies / ‡c [compiled by Bill Strunk] ; contributor, Caroline E. Strunk.
246	1	8	Bünenger-Strunk-Wick family genealogies
264		1	[Nashville, Tennessee] : ‡b [Bill Strunk], ‡c [between 1996 and 2021]
300			7, 5, 6, 6, 11, 60 unnumbered pages : ‡b illustrations, coat of arms, genealogical tables ; ‡c 30 cm
334			single unit ‡2 rdami
336			text ‡b txt ‡2 rdacontent
337			unmediated ‡b n ‡2 rdamedia
338			volume ‡b nc ‡2 rdacarrier
340			‡g monochrome ‡2 rdapcc
340			‡l spiral binding ‡2 rdatb
340			‡p illustration ‡2 rdaill
340			‡p coat of arms ‡2 rdaill
340			‡p genealogical table ‡2 rdaill
520			A family history of the Strunk, Wick, and Büngener families of Illinois.
563			Volume is spiral bound in a plastic binding.

MARC Field 563 (Binding Information)

340	‡g monochrome ‡2 rdapcc
340	‡l open ring binding ‡2 rdatb
340	‡p illustration ‡2 rdaill
340	‡p portrait ‡2 rdaill
500	"(Accompanies private donation including original railroad lantern, padlock, keys, framed photo, 1918 Popular Mechanics magazine, & I.C.R. Rules & Instructions book.)"--Cover.
500	Housed at The Groff Memorial Library.
500	Materials in binder donated.
520	This volume includes images, newspaper articles, and more that pertain to the Illinois Centrail Railroad Bridge 1918 accident in Grayville, Illinois.
563	Volume has open ring binding on left-hand side.

Illinois Central Railroad Bridge 1918 accident MARC Field 563

340		‡g polychrome ‡2 rdacc
340		‡l spiral binding ‡2 rdatb
340		‡p illustration ‡2 rdaill
340		‡p map ‡2 rdaill
340		‡p portrait ‡2 rdaill
353		bibliography ‡b bibliography
504		Includes bibliographic references (page 32).
520		A chronology of Major Thomas W. Morgan's military service during the Civil War, including biographical information.
563		Spiral binding with metal rings on left-hand side.

Chronology of military service of Major Thomas W. Morgan (1861-1864) 563 Example

340		‡g polychrome ‡2 rdacc
340		‡g monochrome ‡2 rdapcc
340		‡l spiral binding ‡2 rdatb
340		‡p illustration ‡2 rdaill
340		‡p map ‡2 rdaill
340		‡p portrait ‡2 rdaill
340		‡p genealogical table ‡2 rdaill
353		bibliography ‡b bibliography
353		index ‡b index
504		Includes bibliographic references (pages 1-2) and index.
520		The history of the Miller family from Piatt and De Witt County, Illinois.
563		Spiral bound on left side of volume.

Our Miller Family 563 Example

Resources

OCLC Bibliographic Formats & Standards,
<https://www.oclc.org/bibformats/En Html>

RDA Registry Value Vocabularies,
<https://www.rdaregistry.info/termlist/>

OCLC Support And Training,
<https://www.oclc.org/bibformats/en/3xx/340.html>

RDA Registry RDA Materials,
<http://www.rdaregistry.info/termlist/rdamaterial/>

RDA Registry RDA Production Method,
<http://www.rdaregistry.info/termlist/rdaproductionmethod/>

RDA Colour Content,
<http://www.rdaregistry.info/termlist/rdacolourcontent/>

RDA Registry RDA Generation,
<http://www.rdaregistry.info/termlist/rdageneration/>

RDA Registry RDA Type Of Binding,
<http://www.rdaregistry.info/termlist/rdatatypeofbinding/>

RDA Registry RDA Polarity,
<http://www.rdaregistry.info/termlist/rdapolarity/>

RDA Registry RDA Illustrative Content,
<http://www.rdaregistry.info/termlist/illuscontent/#1009>

Wikipedia,
<https://en.wikipedia.org/wiki/folium>

Questions?



This Photo by Unknown Author is licensed under CC BY-NC

ON THE CALL TODAY

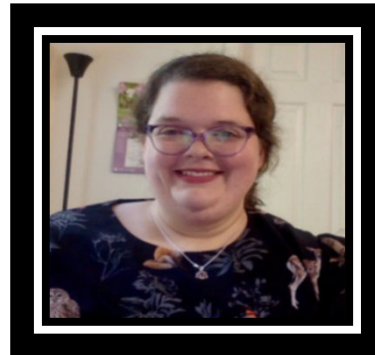
Questions? Contact the CMC:
cmc@illinoisheartland.org



Barbera Scoby
CMC Cataloger



Dr. Pamela Thomas
CMC Bibliographic
Grant Manager



Mary Cornell
CMC Cataloger



Eric McKinney
CMC Cataloger



Katy Egts
Metadata Cataloger