

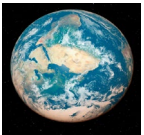
MAPPING OUR HISTORY

- Barb Scoby, Cataloger, Cataloging Maintenance Center
- Eric McKinney, Cataloging Trainer, Cataloging Maintenance Center

Online with the CMC, January 9th, 2025, 10 a.m.

Agenda

- Overall:
Learning and fun
- Specific:
 - Presenter bios
 - Definitions
 - Cartography-specific fields
 - Examples



Eric McKinney



Barb Scoby

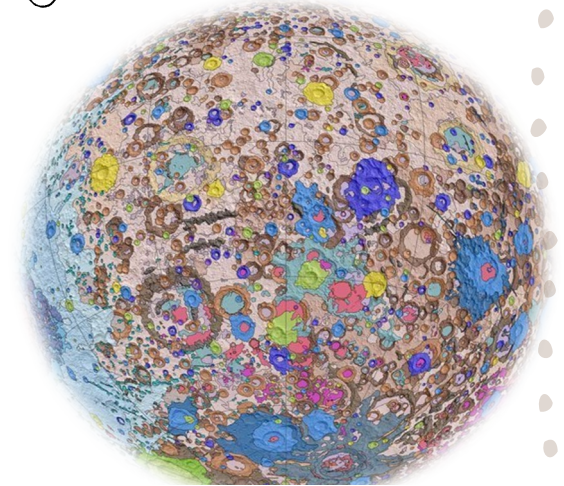


Definitions

Map - Per BFAS, for cataloging purposes, a map is defined as, "...all cartographic material other than a globe."

Plat book - A plat map shows the parcels (lots) that a tract of land has been divided into, streets, structures, flood zones, easements, etc. A plat book is simply a book of plat maps.

Globes - Per BFAS, a globe is a, "...model of a celestial body, usually the Earth or another celestial sphere depicted on the surface of a sphere."



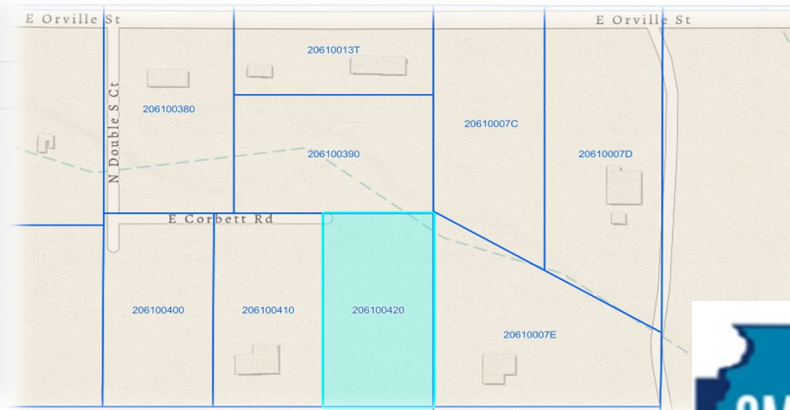
Parcels:

Zoom to

Assessor Parcel Number
206100420
First Owner Name
SCOBY BARBERA A
Second Owner Name

Property Address

Mailing Address
23253 E CORBETT RD
City



Cartography-specific fields

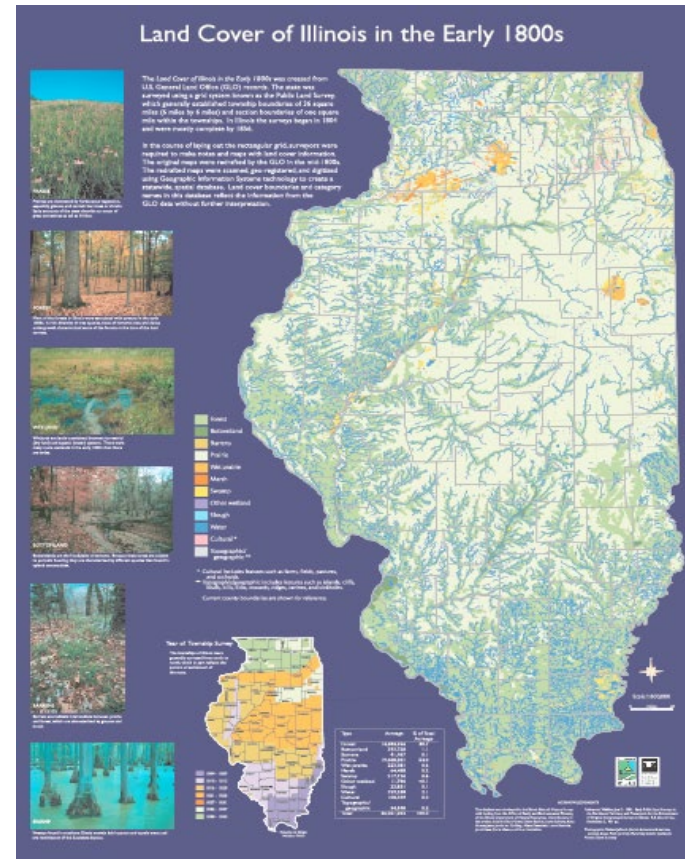
- 0XX
- 1XX
- 255
- 3XX
- 5XX
- Fixed field elements
- Subject headings



MARC Field 007

Map: 007 __ a †b j †d c †e a †f n †g z
†h n

Globe: 007 __ d †b e †d c †e a †f n



MARC Field 034

Map:

034 1 _ a †b 50688

Globe:

034 1 a †b 7600000 †d W1800000 †e 1800000 †f N0900000 †z

Moon



MARC Fields 04X-05X

- 041
 - 041 __ eng
- 043
 - 043 __ n-us-il
 - 043 __ zmo----
- 052
 - 052 __ 4103 ‡b S8
 - 052 __ 3167 b M6



MARC Fields 1XX-2XX

- 1XX
 - None in our plat book example
 - 110 2 _ Real World Globes, ꝑe cartographer, ꝑe publisher.
- 255
 - 255 __ Scale 1:7,600,000. 1 cm = 76 km ꝑc (W 180°--E 180°/N90°--S90°).



MARC Fields 334-336

- 334 - single or multiple?
- 336
 - 336 __ cartographic dataset ±b crd ±2 rdacontent
 - 336 __ cartographic moving image ±b crm ±2 rdacontent
 - 336 __ cartographic tactile image ±b crt ±2 rdacontent
 - 336 __ cartographic tactile three-dimensional form ±b crn ±2 rdacontent
 - 336 __ cartographic three-dimensional form ±b crf ±2 rdacontent



MARC Fields 337-338

- 337
 - 337 __ unmediated †b n †2 rdamedia
- 338
 - 338 __ volume †b nc †2 rdacarrier
 - 338 __ object †b nr †2 rdacarrier



MARC Field 500

500	"Diameter 18" (46 cm). Scale 1:7.6 Million. 1 cm represents 76 km."
500	"Data Sources: NASA, USGS."
500	"Dry erase globe of the new Unified Geologic Map of the Moon with shaded topography from the Lunar Orbiter Laser Altimeter (LOLA). This geologic globe is a synthesis of six Apollo-era regional geologic maps, updated based on data from recent satellite missions. It will serve as a reference for lunar science and future human missions to the Moon"--Publisher's website.
500	Source map data: USGS Astrogeology Science Center. Unified Geologic Map of the Moon, 1:5,000,000. [Reston, Virginia]: United States Geological Survey, 2020. Accessible via Astropedia web portal.



MARC Fields 522, 546, 588

- 522
 - 522 __ Stark County, Illinois.
 - 522 __ Moon.
- 546
 - 546 __ Text in English.
- 581
 - 581 __ #3 Conference report #a "Release of the Digital Unified Global Geologic Map of the Moon at 1:5,000,000- scale." Fortezzo, C.M., P.D. Spudis, and S.L. Harrel. 51st Lunar and Planetary Science Conference, 2020.
- 588
 - 588 0 _ Title from clear plastic sticker affixed on globe.



The Fixed Field Elements

Rec stat c	Entered 19960610		Replaced 20241101		
Type e	ELvl	Srce	Relf	Ctrl	Lang eng
BLvl m	Form	GPub	SpFm	MRec	Ctry ilu
CrTp e	Indx 1	Proj	DtSt t	Dates 1995	, 1995
Desc i					

Maps	<u>Rec stat</u> c	<u>Entered</u> 20230531	<u>Replaced</u> 20241227125423.5
<u>Type</u> e	<u>ELvl</u> <input type="text"/>	<u>Srce</u> <input type="text"/>	<u>Relf</u> <input type="text"/>
<u>BLvl</u> m	<u>Form</u> <input type="text"/>	<u>GPub</u> <input type="text"/>	<u>SpFm</u> <input type="text"/>
<u>CrTp</u> d	<u>Indx</u> 0	<u>Proj</u> <input type="text"/>	<u>DtSt</u> t
<u>Desc</u> i			
		<u>Ctrl</u> <input type="text"/>	<u>Lang</u> eng
		<u>MRec</u> <input type="text"/>	<u>Ctry</u> cau
		<u>Dates</u> 2020	, 2020



Subject Headings

- 650 _0 Real property ±z (State) ±z (City or County) ±v Maps.
- 650 _0 Landowners ±z (State) ±z (City or County) ±v Maps.
- 651 _0 (County, State, Country etc.) ±v Maps.
- 651 _0 (County, State, Country etc.) ±v Directories. (only if lists of names are included)
- 655 _7 Atlases. ±2 lcgft
- 655 _7 Cadastral maps. ±2 lcgft
- 655 _7 Directories. ±2 lcgft (only if lists of names are included)
- 655 _7 Globes.
- 655 _7 Celestial globes.



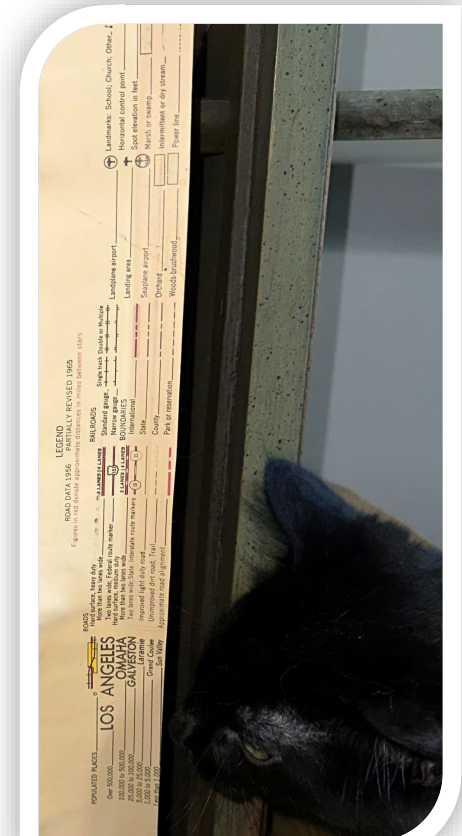
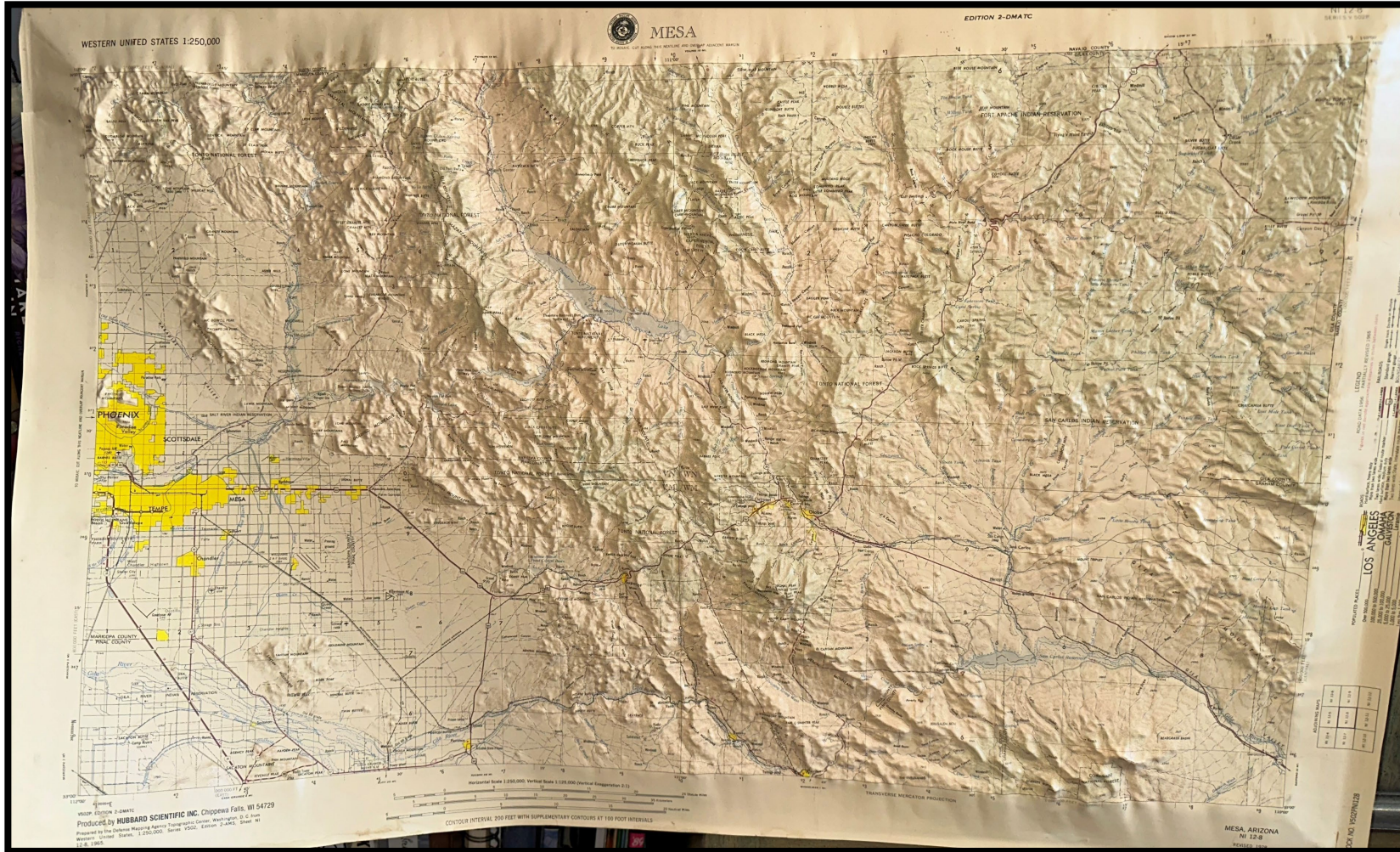
EXAMPLES



**CATALOGING
MAINTENANCE CENTER**
Statewide Cataloging Support

3-D Raised Relief Map

Mesa, Arizona and surrounding areas



**CATALOGING
MAINTENANCE CENTER**


Statewide Cataloging Support

3-D CONT.

[Maps](#) [Rec stat](#) n [Entered](#) 20241217 [Replaced](#) 20241217
[Type](#) e [ELvl](#) [Srce](#) d [Relf](#) a g [Ctrl](#) [Lang](#) eng
[BLvl](#) m [Form](#) [GPub](#) [SpFm](#) [MRec](#) [Ctry](#) dcu
[CrTp](#) a [Indx](#) 0 [Proj](#) bh [DtSt](#) s [Dates](#) 1978 ,
[Desc](#) i

▶ 007 | | a †b q †d c †e l †f n †g z †h n

Subfields	#a	#b (Byte 01)	#d (Byte 03)	#e (Byte 04)	#f (Byte 05)	#g (Byte 06)	#h (Byte 07)
Map	a	SMD d Atlas	Color a One color c Multicolored	Physical medium a Paper b Wood c Stone d Metal e Synthetic f Skin g Textiles i Plastic j Glass l Vinyl n Vellum	Type of reproduction f Facsimile n Not applicable u Unknown z Other	Production/ reproduction details a Photocopy, blueline print b Photocopy c Pre-production d Film u Unknown z Other	Positive/ negative aspect a Positive b Negative m Mixed polarity n Not applicable



[About](#) [Fixed Field](#) [Access Points](#) **0xx** [1xx](#)

0xx

[007 General Information](#)
[007 Values Table](#) ←
[007 Electronic Resource](#)
[007 Globe](#)
[007 Kit](#)
[007 Map](#) ←

007

Record

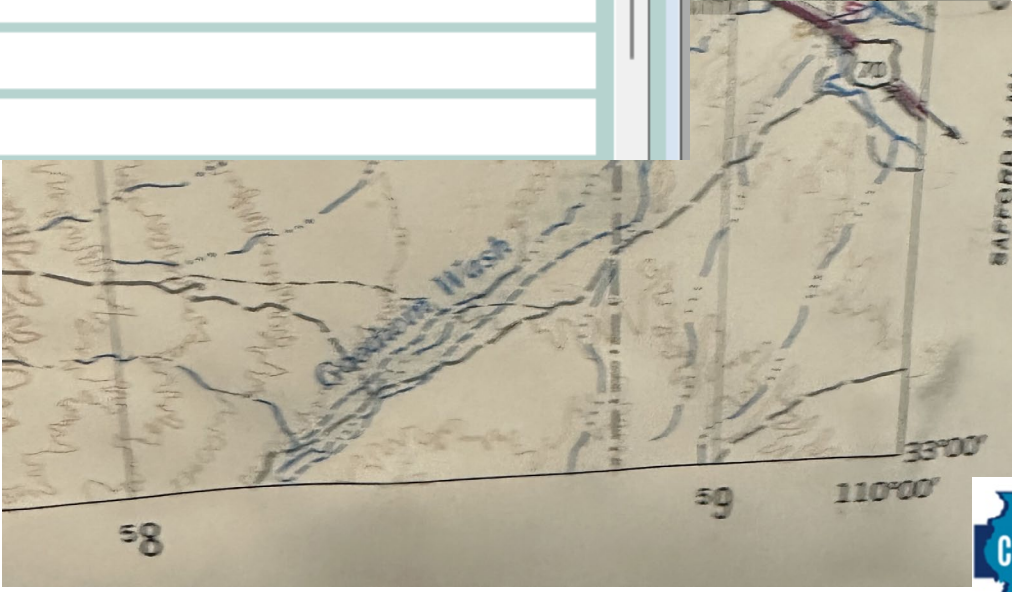
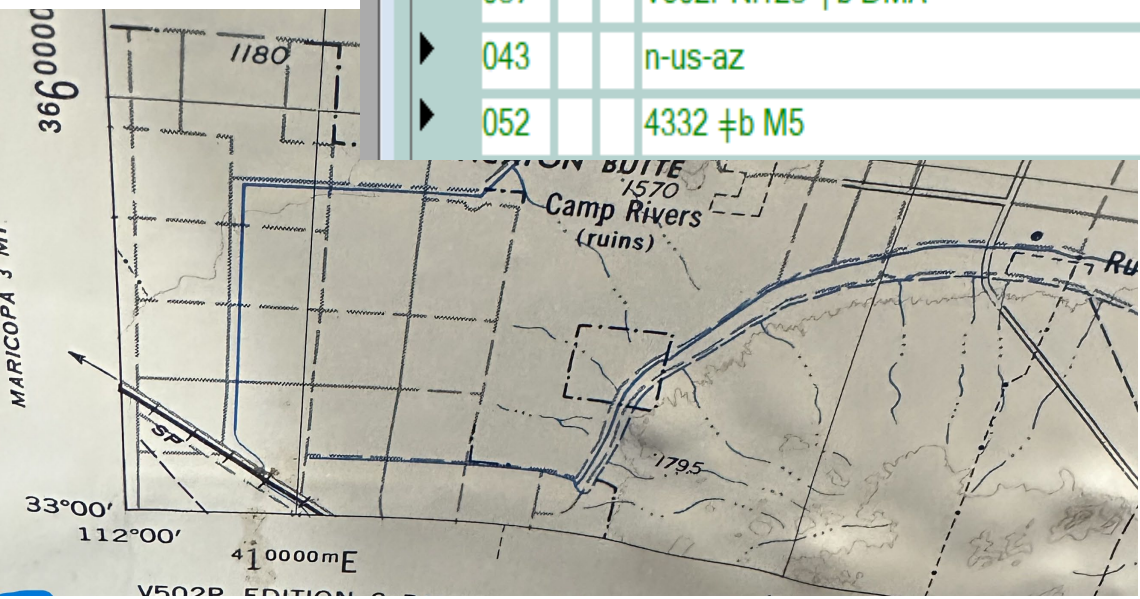
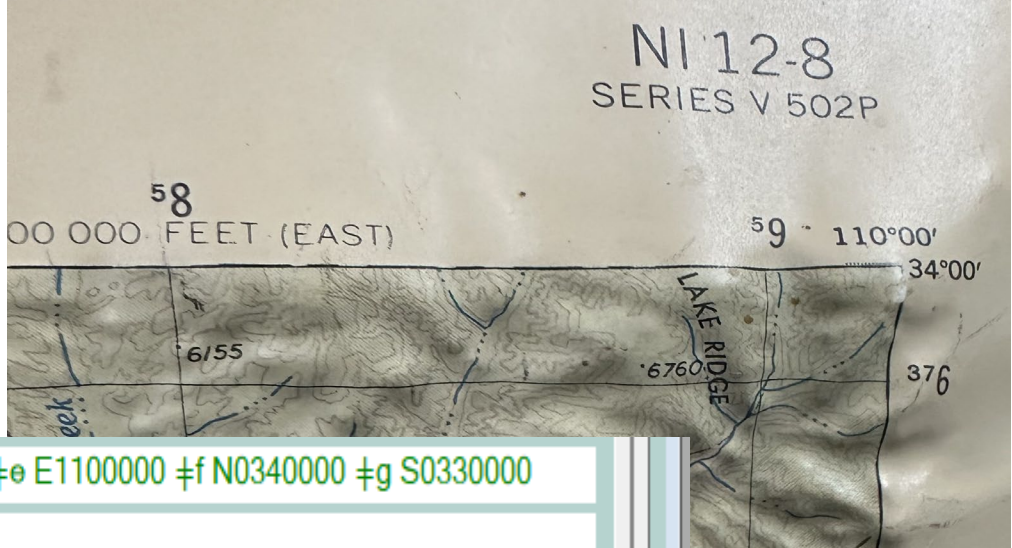
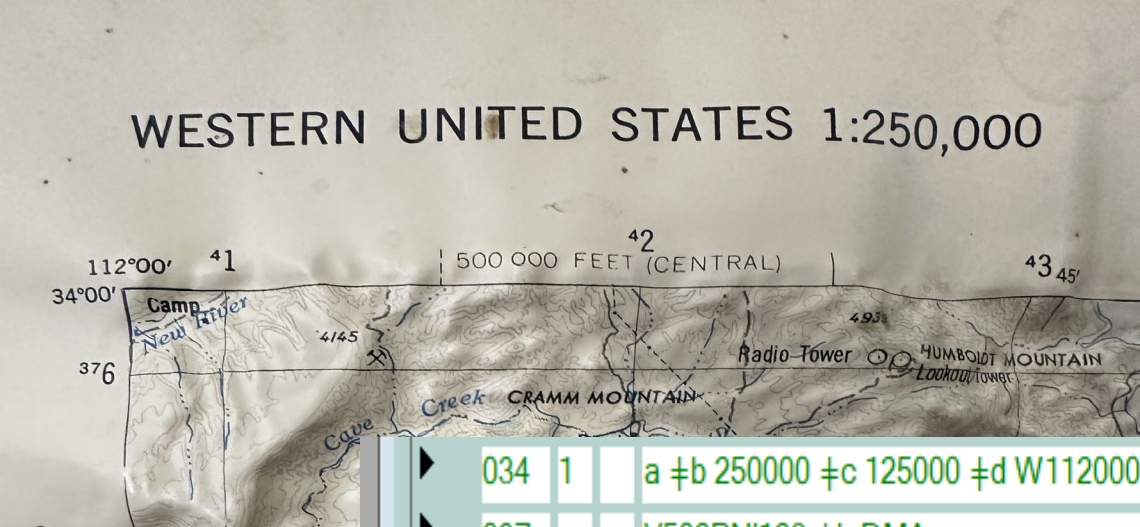
BIB

Field 007

This table



3-D CONT.



▶	034	1	a ¶b 250000 ¶c 125000 ¶d W1120000 ¶e E1100000 ¶f N0340000 ¶g S0330000
▶	037		V502PNI128 ¶b DMA
▶	043		n-us-az
▶	052		4332 ¶b M5

052

<https://www.loc.gov/catdir/cpso/GCutter.pdf>

1st indicator **Code source.** A value that indicates the code source in subfield #a and information in the other subfields.

⌘ **Library of Congress Classification.** Derive the geographic area code from the [Library of Congress Classification—Class G](#) from the range G3190-G9980 and expanded Cutter number lists for place names. Cutter numbers for place names in the United States are also published in [Geographic Cutter Numbers](#).

052 | | 4334 #b M5

G4334	ARIZONA. CITIES AND TOWNS, ETC.
.A2	Adamsville
.A26	Adobe
.A27	Agua Caliente
.A29	Aguila
.A3	Ajo

Find

Previous Next

Replace with

<https://www.loc.gov/aba/publications/FreeLCC/freelcc.html>

Library of Congress Classification PDF Files

[About LCC](#) - [A-BX](#) - [C-F](#) - [G-J](#) - [K-KZ](#) - [L-N](#) - [P-PZ](#) - [Q-S](#) - [T-Z](#) -

.M38	McGuireville
.M4	McNary
.M43	McNeal
.M46	Meadview
M5	Mesa

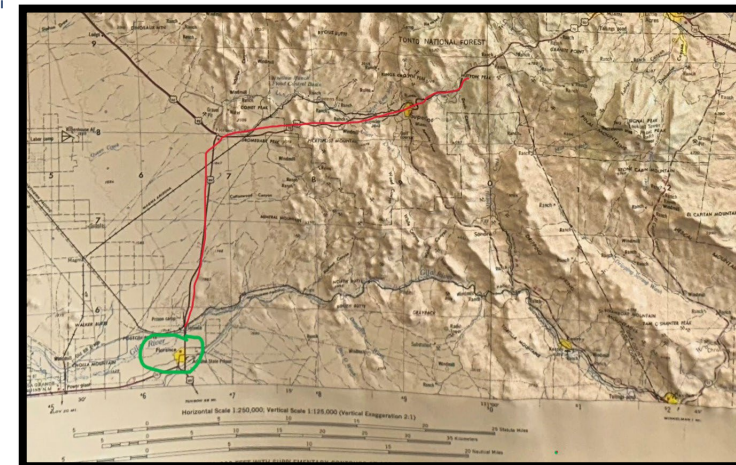
G-J

- [G Preface](#) Geography. Maps. Anthropology. Recreation (PDF, 91 KB)
- [G Outline](#) Geography. Maps. Anthropology. Recreation (PDF, 109 KB)
- [G Text](#) Geography. Maps. Anthropology. Recreation (PDF, 1.40 MB)
- [G Cutters](#) Geography. Maps. Anthropology. Recreation (PDF, 3.71 MB)
- [Subclass G \(Cartographic Materials\)](#) Geographic Cutter Numbers (Tables G1548-G9804)



3XX 5XX 6XX FIELDS

255		Scale 1:250,000 ; vertical scale 1:125,000 (vertical exaggeration 2:1) ; ꞑb Transverse Mercator projection ꞑc (W 112°00'--E 110°00'/N 34°00'--S 33°00').
264	1	Washington, D.C. : ꞑb The Center ; ꞑa Chippewa Falls, WI : ꞑb Hubbard Scientific Inc., ꞑc 1978.
300		1 relief model : ꞑb color, vinyl ; ꞑc 45 x 69 x 3 cm
336		cartographic tactile three-dimensional form ꞑb crm ꞑ2 rdacontent
337		unmediated ꞑb n ꞑ2 rdamedia
338		sheet (or object???) ꞑb nb ꞑ2 rdacarrier
500		Series V502P, edition 2-DMATC.
500		"Compiled in 1955 by photogrammetric methods and from USGS quadrangles 1:24,000, 1:31,000, and 1:62,500-scale, dated 1903-1953. Photographs field annotated 1953. Revised by the U.S. Geological Survey from aerial photographs taken 1973, 1975, 1976 and other source data. Revised information not field checked. Map edited 1978."
500		"NI 12-4 NI 12-12"--Map upper and bottom right.
500		"Contour interval 200 feet with supplementary contours at 100 foot intervals."
500		Relief shown by contours and spot heights.
500		Includes separate legend.
500		Vinyl relief model.
500		Based on latest U.S. Geological Survey maps at time of printing.
522		???
588	0	Title from



- 650 0 [Topographic maps.](#)
- 651 0 [Arizona](#) ꞑv [Relief models.](#)
- 651 0 [Arizona](#) ꞑv [Maps.](#)
- 651 0 [Mesa \(Ariz.\)](#) ꞑv [Relief models.](#)
- 651 0 [Mesa \(Ariz.\)](#) ꞑv [Maps.](#)
- 655 7 [Relief models.](#) ꞑ2 lcgft
- 710 2 [Geological Survey \(U.S.\)](#), ꞑe cartographer ꞑ1
<https://id.oclc.org/worldcat/entity/E39QQPVp83d4Vy7x8MF6BhTJc6>
- 710 2 [Hubbard Scientific Company](#), ꞑe manufacturer ꞑ1
<https://id.oclc.org/worldcat/entity/E39QH7JmtgxpBMMmxRMqXQRQkt>

Sanborn Fire Insurance Map Cont.

110	2	Sanborn Map Company , ≠e cartographer.
245	1 0	Galena, Jo Daviess County, Illinois, October 1924 / ≠c Sanborn Map Company .
246	3 0	Sanborn fire insurance maps of Galena, Illinois
255		Scale [ca. 1:500]. 500 ft. to an inch.
340		≠g polychrome ≠2 rdacc
340		≠p map ≠2 rdail
340		≠p laminate ≠2 rdamat
340		≠p paper ≠2 rdamat
353		index ≠b index
500		Includes index and key to symbols denoting construction features.
500		Revisions made in 1946.
520		Fire insurance map hand colored to show building construction, locations of windows and doors, elevators, and available water facilities. Also shows factories, commercial occupancy of buildings, property boundaries and house and block numbers.
588	0	Title provided by library.



650	0	Fire risk assessment ≠z Illinois ≠z Galena ≠v Maps .
650	0	Cities and towns ≠z Illinois ≠z Jo Daviess County ≠v Maps .
650	0	Surveys .
650	0	Roads ≠z Illinois ≠z Galena ≠v Maps .

655	7	Fire insurance maps . ≠2 lcgt
655	7	Maps . ≠2 lcgt

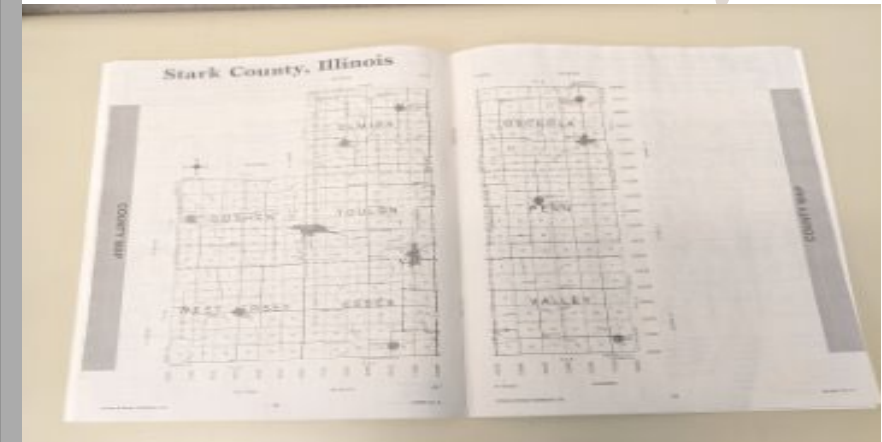


Stark County, Illinois Plat Books

OCLC 1479559037 No holdings in VICSF - no other holdings

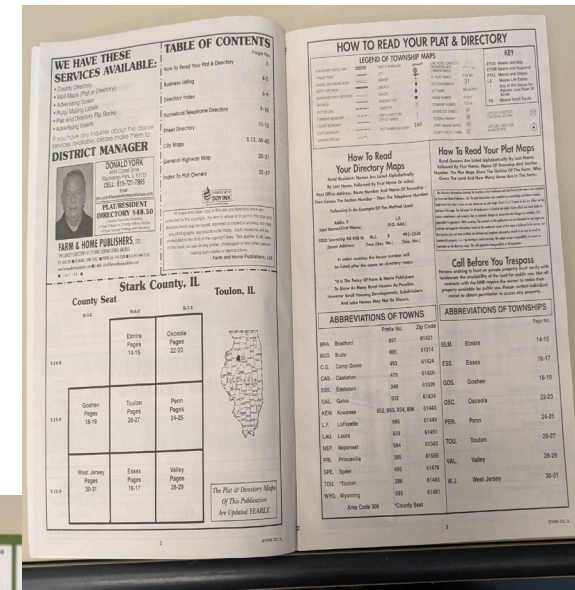
Maps Rec stat c Entered 20241217 Replaced 20241230143846.4
 Type e ELvl Srce Relf Ctrl Lang eng
 BLvl m Form GPub SpFm MRec Ctry iau
 CrTp e Indx 1 Proj DtSt t Dates 2023 , 2023
 Desc i

007			a †b d †d a †e a †f n †g z †h n
040			VI# †b eng †e rda †c VI# †d VI#
034	1		a †b 56000
043			n-us-il
052			4103 †b S8
082	0	4	912.773 †2 23/eng/20241217
090			†b
049			MAIN
245	0	0	Stark County, Illinois, plat & directory, 2023.
246	3		Stark County, Illinois plat and directory
255			Scale [ca. 1:56,000].
264	1		Belmond, IA : †b FHP® Farm and Home Publishers, †c [2023]
264	4		†c ©2023



Stark County, Illinois Plat Books Cont.

300		1 atlas (32 pages) : ≠b maps (some color), illustrations (some color) ; ≠c 28 cm
334		single unit ≠2 rdami
336		cartographic image ≠b cri ≠2 rdacontent
337		unmediated ≠b n ≠2 rdamedia
338		volume ≠b nc ≠2 rdacarrier
340		≠l perfect binding ≠2 rdatb
340		≠g monochrome ≠2 rdacc
340		≠g polychrome ≠2 rdacc
340		≠p illustration ≠2 rdail
340		≠p map ≠2 rdaill
353		index ≠b index
588	0	Cover title.
500		Includes index to owners, directories to residents (with index), and telephone directory.
505	0 0	≠t How to read your plat and directory -- ≠t Business directory index -- ≠t Directory index -- ≠t Street index -- ≠t General highway map -- ≠t Plat owners index.
563		Perfect binding.
650	0	Real property ≠z Illinois ≠z Stark County ≠v Maps .
650	0	Landowners ≠z Illinois ≠z Stark County ≠v Maps .
651	0	Stark County (Ill.) ≠v Maps .
651	0	Stark County (Ill.) ≠v Directories .
655	7	City directories . ≠2 lcgft
710	2	Farm & Home Publishers , ≠e publisher, ≠e issuing body.



Resources

<https://www.oclc.org/bibformats/en/home.html>

<https://www.fgdc.gov/csdgmgraphical/ideninfo/sptldo/faq.htm>

<https://realworldglobes.biz/product/moon-unified-geologic-globe/>

<https://www.loc.gov/marc/languages/>

<https://www.rdaregistry.info/termList/ModelIssue/>



Kaiser, T., Andrew, P., Beljour, A., Moore, S., Wong, T., & Wright, A. Q. (2020, December). *Guidelines for cataloging cartographic resources using RDA*. Map and Geospatial Information Round Table Cataloging and Classification Committee's Task Force on Best Practices. <https://alair.ala.org/items/8a386fc5-2565-4eb1-9385-0bf03f2ec43e>



AI artwork created in Playground-v3

1/8/2025

ON THE CALL TODAY

Questions? Contact the CMC:
cmc@illinoisheartland.org



Dr. Pamela Thomas
Bibliographic Grant
Manager – Our
fearless leader.



Eric McKinney
CMC Cataloging
Trainer - Presenter



Barb Scoby
CMC Cataloger -
Presenter



Mary Cornell
CMC Cataloger



Kat Anderberg
Metadata Cataloger



Ryan Rafferty
Special Project Cataloger



Katie Roberts
Special Project Cataloger



Andrea Giosta
Special Project Cataloger

